



HACHIMAN PC

# HACHIMAN PC SETUP GUIDE

FROM UNBOXING TO FULL POWER



## UNROLL THE SCROLL, BEGIN THE JOURNEY

Step into the path of performance—our guide leads you with clarity and simplicity, from first power to full strength.

## INSIDE YOUR GAMING PC



The image shown is for reference only.  
The actual look of your system may differ.



Certain components such as the case, CPU cooler, or SSD may not match the sample shown, but serve the same purpose.

## UNBOXING YOUR HACHIMAN GAMING PC

When unboxing your system, keep all packaging materials for warranty and shipping purposes.  
Carefully check that all standard items are included.



### PC Tower

Houses all of your system's hardware.



### Power cord

Connects your PC to the power supply.  
(May be stored inside the case during shipping.)



### Additional Accessories

Depending on your model, this may include Wi-Fi antennas. Attach them securely to the gold connectors at the rear of the PC.

**Note:** Before setup, visually inspect your system for any shipping damage. If you find an issue, contact Hachiman Support immediately.

# PREPARING YOUR WORKSPACE



## PC PLACEMENT

Place your PC in a well-ventilated spot to avoid overheating and extend its lifespan. Keep drinks and liquids away to prevent accidents.

[IMPORTANT!] If your PC sits on carpet, raise it slightly to improve airflow and avoid static-related issues.



## CABLE MANAGEMENT

Keep your cables neat and secure to avoid tangles and prevent damage. Use a trusted surge protector to shield your PC from power surges or electrical fluctuations.



## AIRFLOW

Good airflow keeps your PC cool and running smoothly, directly improving performance and hardware lifespan.

[IMPORTANT!] Clean dust inside your PC every 3 months—or monthly if you have pets—to keep airflow unobstructed.



# SETTING UP YOUR GAMING DESKTOP PC



## STEP 1

Removing internal packaging foam is crucial to prevent air-flow blockages or other issues that could impact the system's performance.

Remove: Screws from left side panel and remove the panel.  
Note: Screw location can vary depending on chassis model.



## STEP 2

Check that all internal cables and hardware connections are secure. Confirm that each plug is fully seated and nothing has come loose during shipping. This quick inspection ensures your system is ready to operate without issues once powered on.

## STEP 3

To get your system running, connect the power cable and all essential peripherals. This includes your monitor, keyboard, mouse, Wi-Fi antennas, and optional devices such as a headset or external drive.

[A] Plug your monitor into the graphics card's HDMI or DisplayPort. Do not use the motherboard ports for display.  
Note: Amount of HDMI and Display ports will vary

[B] Attach peripherals such as mouse, keyboard, audio, or Ethernet cable into the correct I/O ports.

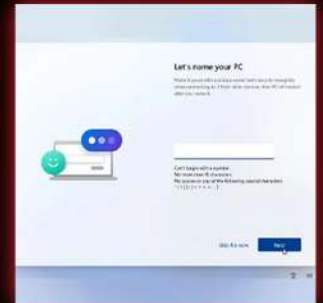
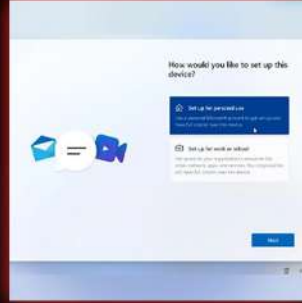
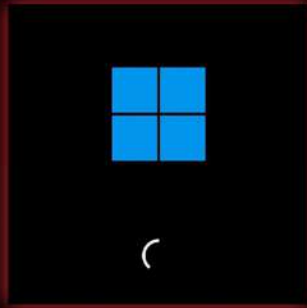
[C] If included, screw the Wi-Fi antennas onto the gold connectors on the rear I/O.

[D] Connect the power cord to the PSU and wall outlet, flip the switch to "I," then press the power button on your case to start the system.



# INITIAL BOOT AND SETUP

When you power on your PC for the first time, the system will guide you through setup by asking you to choose your preferred language, set the correct time and time zone, and connect to a wired or wireless network before completing the initial configuration.



## CONGRATULATIONS ON YOUR NEW HACHIMAN PC!

You've completed the setup of your new Hachiman system—welcome to a world built for power, precision, and performance. Step into immersive experiences with confidence, knowing that support is always within reach whenever you need it.

**Need help? Call +1 (877) 764-4968.**

Take a moment to register your Hachiman PC today. Registration adds an extra year to your warranty, ensures faster and smoother support, and helps us assist you more efficiently if issues arise. Secure your system now and enjoy a worry-free journey filled with gaming, creativity, and peak performance.

[www.hachimanpc.com](http://www.hachimanpc.com)

**REGISTER YOUR PC**

Platinum Micro Inc., 15815 Monte Street Ste F103 Sylmar, CA 91342

Call: +1(877) 764-4968 Mon-Fri 8.30am - 5.30pm

HachimanPC Brand & Website is a Division of Platinum Micro Inc.,